



## The Union 2 | Attached Bungalow | 1041B, 1042B, 1042C, 1045B -

\*Attached Bungalow | Arnprior | Inside Unit

- Equipped with TORLYS® durable, contemporary waterproof flooring!
- Waterproof TORLYS® Everwood in foyer, main hall, laundry, kitchen, living/dining room
- Waterproof TORLYS® Evertile in main bathroom and ensuite bathroom
- 9' Smooth Ceilings through out main floor
- Improved Sound Deadening Party Walls to create a quieter living space
- Excel® Board Exterior Sheathing provides unprecedented comfort and increased energy savings.
- PANASONIC Eco-vent® fan in ensuite bathroom for quieter flow of air and improved air quality.
- LED lighting throughout the home to reduce electricity costs
- Combo HVAC System using 97.7% energy efficient boiler and multi-speed hydronic air handler
- Energy Recovery Ventilator
- Ecobee3 smart thermostat allows you to easily adjust the temperature of your home for personal comfort through your smart phone
- Conduit rough-in for future solar panels
- Egress windows in basement
- 3-piece rough-in for future bathroom in basement
- Heat pump rough-in in basement
- Capped ceiling outlet above kitchen sink
- Pot light in ensuite bathroom shower
- 36' Kitchen Upper Cabinets with Crown & Filler
- Laminate Countertops in Kitchen & Bathrooms
- Whirlpool Stainless Steel Appliances in Kitchen - Fridge, Dishwasher, Stove & Hoodfan

\*Orientation, specifications and colour may vary. Please see sales consultant for details.



### Property Detail

<b>Type</b>	New Homes
<b>Status</b>	For Sale
<b>Location</b>	Arnprior   Callahan Estates
<b>Price</b>	\$300,000.00 Starting from the mid 300's
<b>Area</b>	1225 sq. ft.
<b>Bedrooms</b>	2
<b>Bathrooms</b>	2



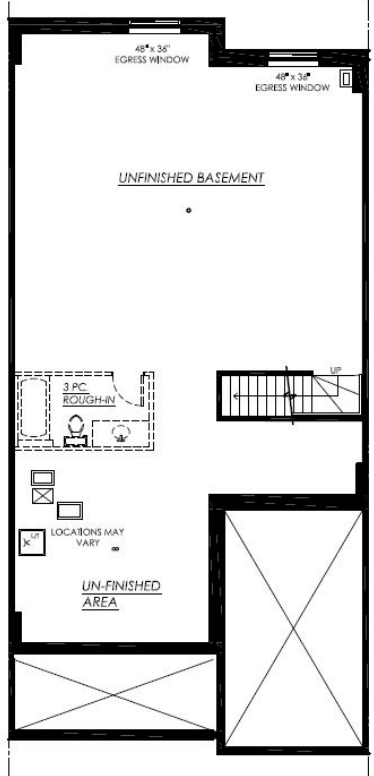
**Email:** [info@campanale.com](mailto:info@campanale.com)

**Phone:** (613) 730-7000

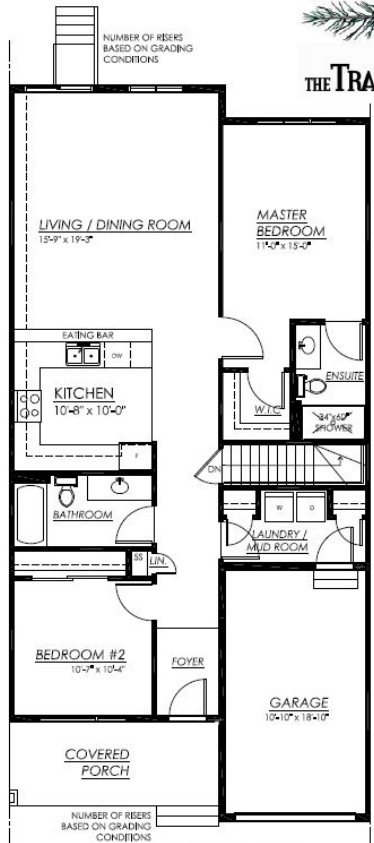
NOT TO SCALE  
 ACTUAL USABLE AREA MAY VARY FROM STATED FLOOR AREA  
 DIMENSIONS ARE APPROXIMATE  
 PLANS / ELEVATIONS ARE SUBJECT TO CHANGE WITHOUT NOTICE  
 AND ARE ONLY SUGGESTED LAYOUTS AND FINISHES  
 E & O S  
 REVISED SEPT 2019/2018

**THE UNION 2**  
 CALLAHAN ESTATES  
 INSIDE UNIT - LOT 10088  
 1225 SQ FT

**CALLAHAN**  
 ESTATES  
 THE TRAIL SERIES



**BASEMENT PLAN**



**GROUND FLOOR PLAN**

NUMBER OF RISERS  
 BASED ON GRADING  
 CONDITIONS